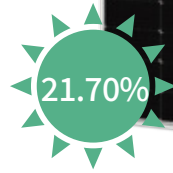
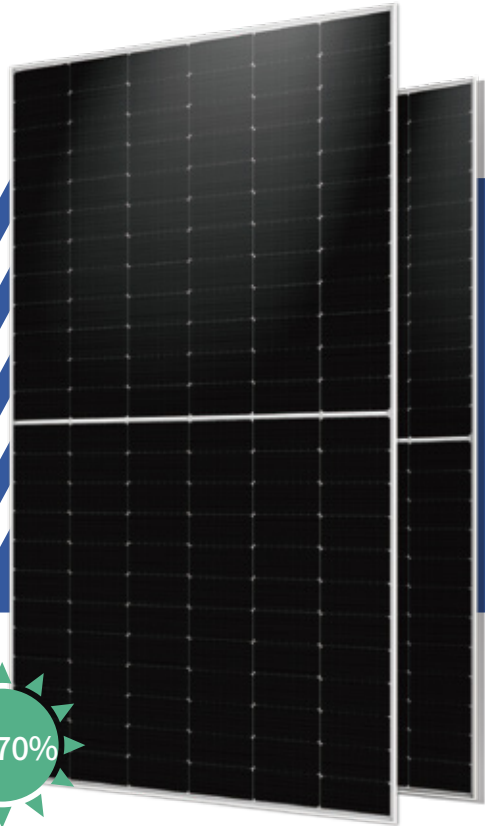


GC-144M(182)

540-560 Watt

HALF-CELL MONO PERC Double Glass



Key Features



Multi Busbar Solar Cell

The special circuit design greatly reduces the hot spot temperature;



PID Resistant

Excellent PID tolerance at 96 hours (85 ° C /85%) and can also be improved to meet higher standards in particularly harsh environments;



Anti-Crack

Excellent micro-cracking resistance, more uniform internal stress;

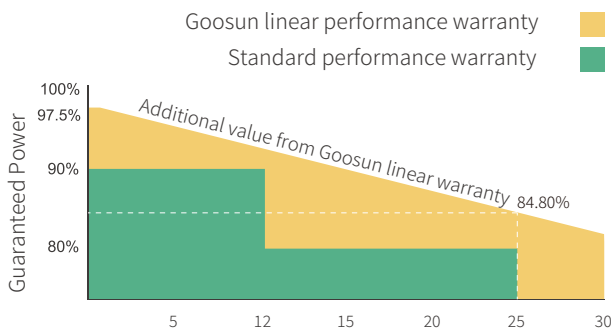


Module efficiency up to 21.70%

The half-cell structure brings low resistance characteristics, higher lifetime power generation capacity, and reduced annual power attenuation;

Linear Performance Warranty

12 Years Product Warranty • 30 Years Linear Power Warranty



Certifications

- IEC 61215, IEC 61730 , CE , CQC
- ISO9001: 2015: Quality management system
- ISO14001: 2015: Environmental management system
- ISO45001: 2018: Occupational health and safety management system



Electrical Specifications

Module Type	GC-144M-540HBD		GC-144M-545HBD		GC-144M-550HBD		GC-144M-555HBD		GC-144M-560HBD	
	STC	NOCT	STC	NOCT	STC	NOCT	STC	NOCT	STC	NOCT
Maximum power(Pmax)	540	403.6	545	407.4	550	411.1	555	414.8	560	418.3
Open circuit Voltage(Voc)	49.50	46.54	49.65	46.68	49.80	46.82	49.95	46.97	50.1	47.11
Short circuit current (Isc/A)	13.85	11.17	13.92	11.23	13.99	11.29	14.05	11.34	14.10	11.40
Voltage at maximum power (Vmp)	41.65	38.86	41.80	39.00	41.95	39.14	42.10	39.28	42.25	39.42
current Maximum power(Imp)	12.97	10.39	13.04	10.45	13.12	10.51	13.19	10.56	13.27	10.62
Module efficiency (%)	20.90%		21.10%		21.30%		21.50%		21.70%	
Power Tolerance (W)	0~+5									

STC: Irradiance 1000W/m², Cell Temperature 25°C, Air Mass AM1.5.

NOCT: Irradiance at 800W/m², Ambient Temperature 20°C, Wind Speed 1m/s.

Bifacial Output-rearside Power Gain

Pmax/W	Voc/V	Isc/A	Vmp/V	Imp/A	Pmax gain
572	49.65	14.61	41.80	13.69	5%
600	49.65	15.31	41.80	14.34	10%
627	49.75	16.00	41.90	14.99	15%
654	49.75	16.70	41.90	15.65	20%
681	49.75	17.39	41.90	16.30	25%

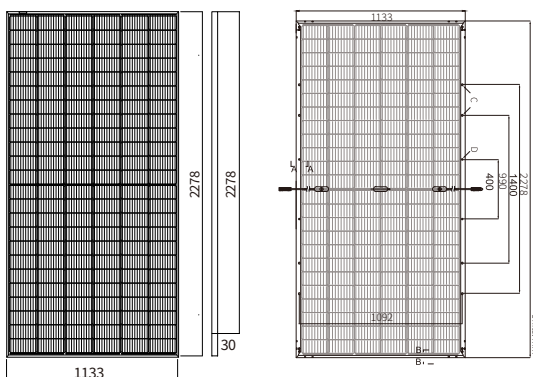
Mechanical Specifications

Cell Type	MONO
No. of Cells	144 (6×24)
Dimension	2278x1133x30mm
Weight	31.5kg
Front Glass	2.0mm high permeability, AR coated thermally strengthened glass
Back Glass	2.0mm semi-tempered glass
Frame	Anodized Aluminium Alloy
Junction Box	IP68,3diodes
Output Cables	4mm ² , Length 300mm or customized
Connector type	MC4 compatible

Packaging Configurations

Per Pallet	36 pcs
Per 40' HQ Container	720 pcs

Engineering Drawings



Temperature Characteristics

NOCT Temperature	45°C±2°C
Temperature Coefficient (Pmax)	-0.360%/°C
Temperature Coefficient (Voc)	-0.280%/°C
Temperature Coefficient (Isc)	0.050%/°C

Maximum Ratings

Maximum system voltage (IEC)	1500V DC (IEC)
Snow / Wind	5400Pa / 2400Pa
Operating Temperature	-40°C~ +85°C
Maximum series fuse rating	30A

I-V Curve

